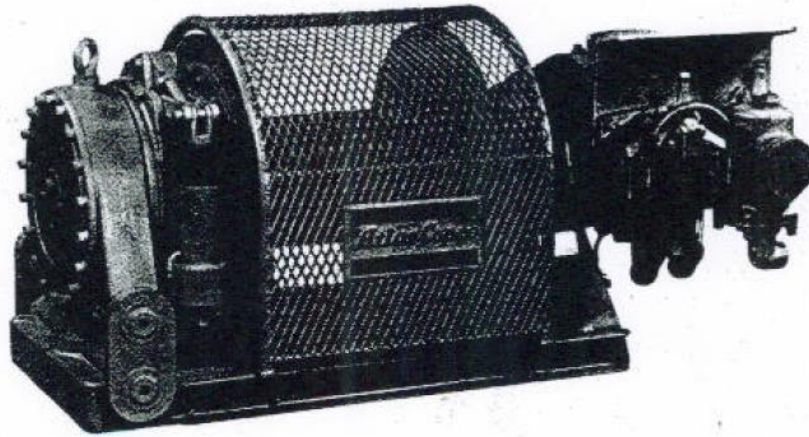


## ATLAS COPCO OWK 513-56



### Specifications

Line speed	14 m/min
Air connection	1 ¼ "BSP
Working pressure	6.3 bar
Flow	10 m <sup>3</sup> /min
Weight	1231 kg (no cable)
Rope capacity	514 m
Brake	Auto failsafe drum brake
Rope connection	Rope is fitted to this winch by clam on the drum
Application	Hoisting and pulling

Hoisting				Pulling			
Max. load SWL, kg	Rope Speed, m/min	Min. rope Diam, mm	Max. rope* Length, m	Max. pull power		Min. rope Diam, mm	Max. rope* Length, m
				kN	kp		
5000	9.7	19	455	106	10,800	22	305

\* Carefully wound rope. In practice, 80 % of the rope capacity can be utilized.



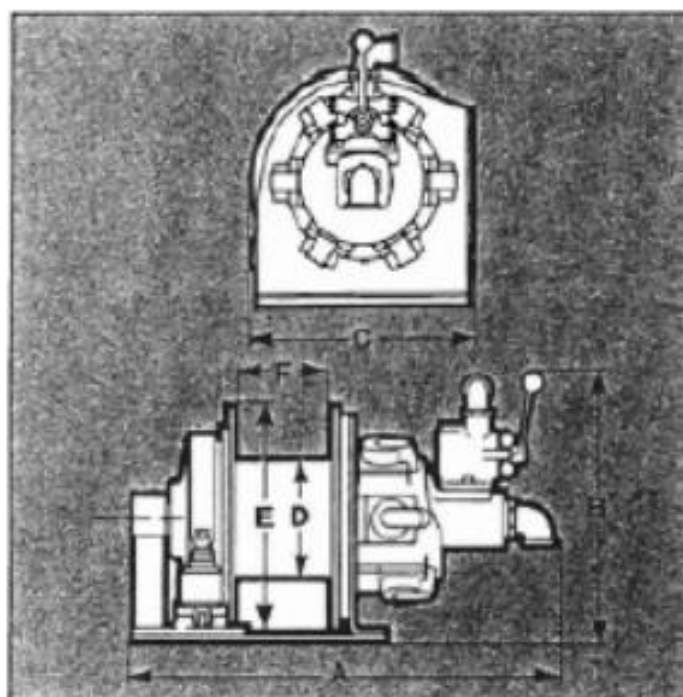
**AmoraSub**

[www.amorasub.pt](http://www.amorasub.pt)

Parque Industrial S. Marta  
de Corroios  
Rua Manuel Ribeiro, Lote 13  
2845-409 Amora - Portugal

T +351 919 708 279  
E [geral@amorasub.pt](mailto:geral@amorasub.pt)

## Dimensions



- A – Overall length
- B – Overall height (to top of flange or lever)
- C – Overall width
- D – Drum diameter
- E – Flange diameter
- F – Drum length (distance between flanges)

A (mm)	B (mm)	C (mm)	D (mm)	E (mm)	F (mm)
1770	900	914	324	750	555



## AmoraSub

[www.amorasub.pt](http://www.amorasub.pt)

Parque Industrial S. Marta  
de Corroios  
Rua Manuel Ribeiro, Lote 13  
2845-409 Amora - Portugal

T +351 919 708 279  
E [geral@amorasub.pt](mailto:geral@amorasub.pt)