

INGERSOLL RAND HU40



Specifications

Model	HU40
Power type	Air
Brake type	Manual ext. band brake
Weight	238 kg (No cable)
Line pull (Nominal capacity)	1814 kg
Line speed	21 m/min
Drum root diameter	175 mm (7")
Wire rope diameter	9.5 mm (3/8"), 11 mm (7/16"), 13 mm (1/2")
Rope anchor hole diameter	17.5 mm (11/16")
Motor	11 hp
Avg. CFM required	175
Full drum capacity	209 m (9.5mm wire rope) 145 m (11mm wire rope) 116 m (13mm wire rope)
Drum length	181 mm (7 1/8")
Max stall pull (First layer @6.3 bar)	4082 kg

Recommended working length is 80% rope capacity



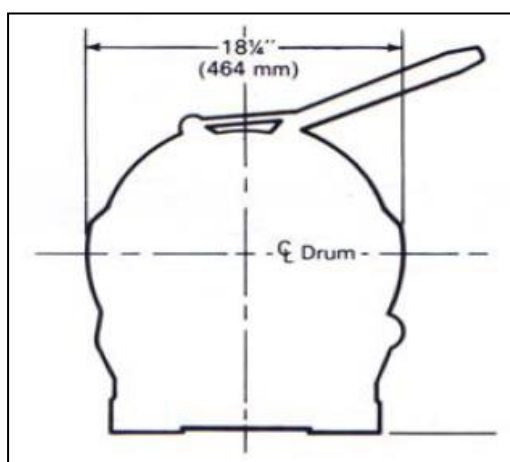
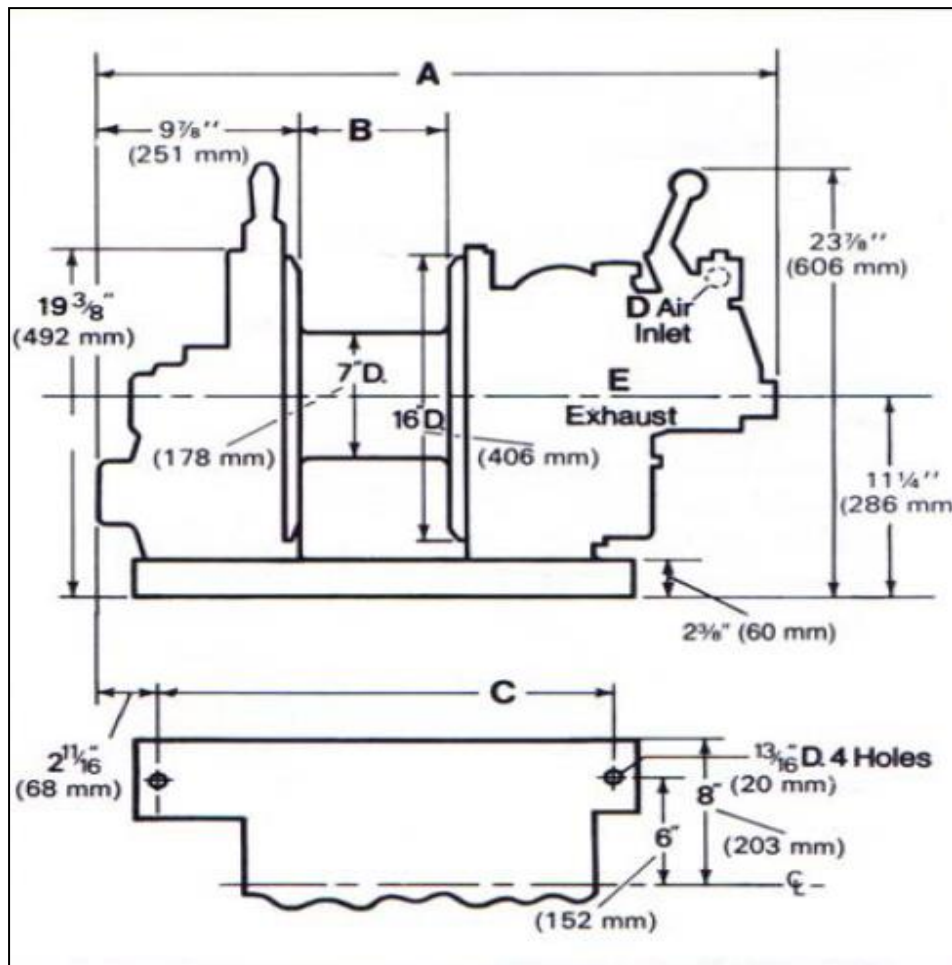
AmoraSub

www.amorasub.pt

Parque Industrial S. Marta
de Corroios
Rua Manuel Ribeiro, Lote 13
2845-409 Amora - Portugal

T +351 919 708 279
E geral@amorasub.pt

Dimensions



- A - 803 mm (31 5/8")
- B - 181mm (7 1/8")
- C - 564 mm (22 3/16")
- D - 25 mm (1") NPT



AmoraSub

www.amorasub.pt

Parque Industrial S. Marta
de Corroios
Rua Manuel Ribeiro, Lote 13
2845-409 Amora - Portugal

T +351 919 708 279
E geral@amorasub.pt